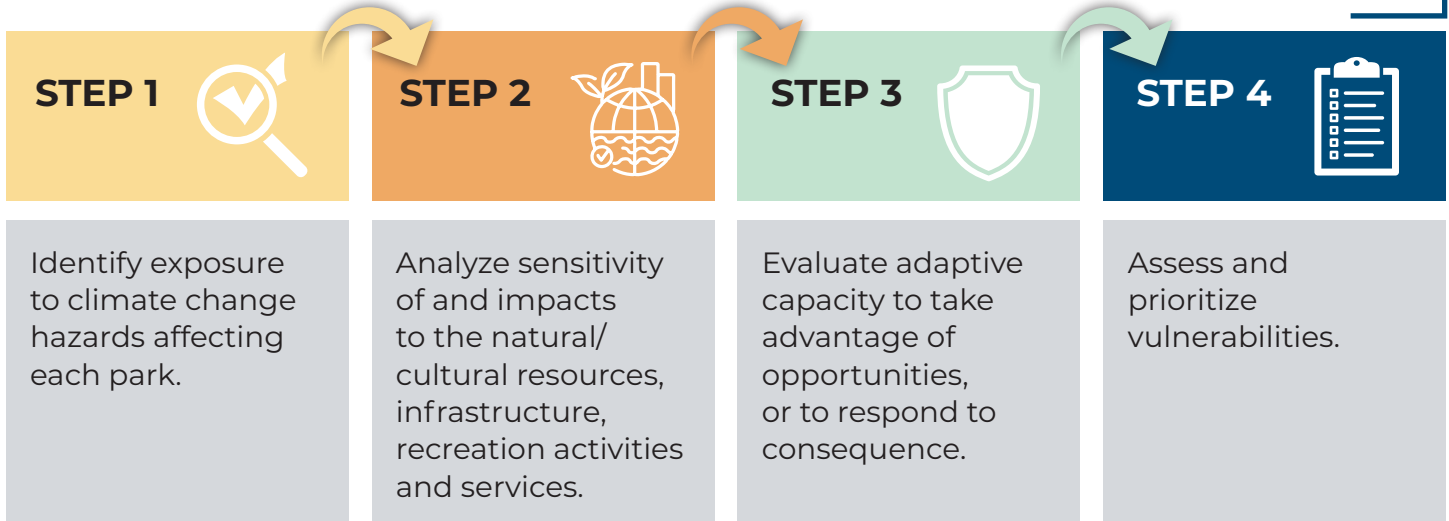


CLIMATE CHANGE VULNERABILITY ASSESSMENT

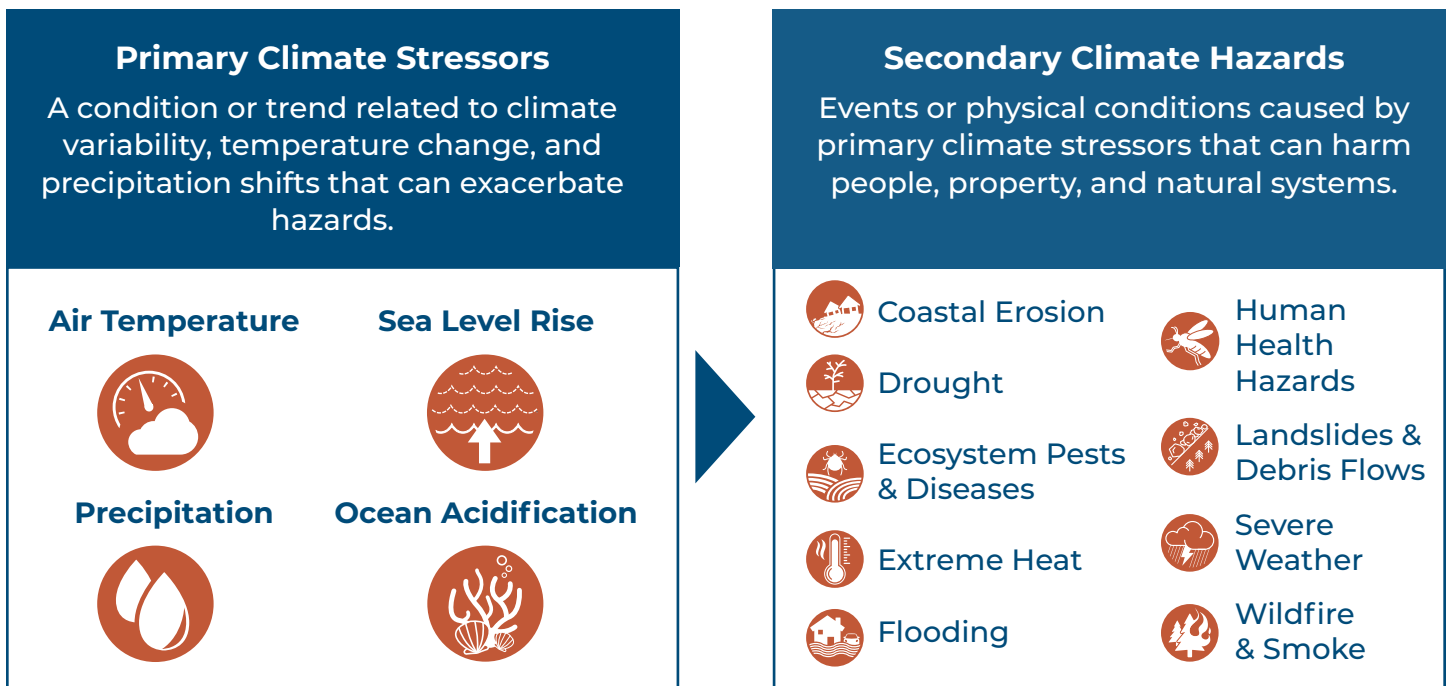
What is a Climate Vulnerability Assessment?

A climate change vulnerability assessment (CCVA) analyzes how a changing climate may affect State Park infrastructure, visitor serving facilities, recreation activities, and drive changes to natural and cultural resources. It helps identify resources that are most vulnerable to climate stressors and hazards and informs development of potential future actions to improve adaptive capacity and resilience. The CCVA follows a **four-step process**, as outlined in the California Adaptation Planning Guide:



Climate Stressors Affecting the Three Park System

The three park unit systems faces **13 climate-related hazards** that are expected to become more frequent and severe:



A resilient and healthy ecosystem can serve as a foundation upon which these vulnerable areas of visitor use, activities and services can function more sustainably while natural and cultural resources are protected, ensuring the park system's longevity.

AREAS OF VULNERABILITY



Infrastructure, Facilities, and Services

- Transportation Infrastructure
- Water Infrastructure and Services
- Wastewater Infrastructure and Services
- Erosion Control Measures
- Emergency Services
- Visitor Services
- Energy Delivery and Communication



Populations

- Visitors with Disabilities
- Low-income Visitors
- State Parks Employees
- Visitors with Limited English Proficiency



Recreation and Tourism Activities

- Camping
- Horseback Riding
- Hot Springs Access
- Hiking/Walking
- Fishing
- Beach Access/Recreation

Adaptive Capacity

Adaptive capacity is the ability of ecosystems, infrastructure, and recreation activities to adapt to changing climate conditions using existing tools, resources, and funding. Adaptive capacity in the three park unit system is currently limited due to built structures that impede ecosystem function and increase vulnerability. For example, the Gaviota State Park campground was built in the floodplain of Gaviota Creek, preventing natural changes in the flow of the creek and therefore increasing flooding and erosion.

Building Resilience

The General Plan Update will incorporate strategies to absorb the impacts of climate hazards and adapt to changing conditions through restoring natural resources, preserving cultural resources, protecting the most vulnerable visitors, improving critical infrastructure, maintaining recreation access and opportunities.

For more information on the General Plan Update, visit: <https://ecrgplanupdate.com/>